



TECHNICAL DETAILS

- **METAL PARTS:** Material: ST 37
- **CEMENT BOARD:** Standard: TSE 634-2
- **EARTHQUAKE RESISTANCE:** Rating: Grade I
- **CLIMATIC CONDITIONS:** Classification: Third Climatic Zone
- **SNOW LOAD:** Capacity: 80 Kg/m²
- **POLYSTYRENE FOAM (EPS):** Standard: TS 7316
- **EXTERNAL WALL TRANSMISSION COEFFICIENT:** Value: 0.74 Kcal/m²hc
- **ROOF TRANSMISSION COEFFICIENT:** Value: 0.69 Kcal/m²hc
- **THERMAL TRANSFER COEFFICIENT OF THE FLOOR:** Value: 0.68 Kcal/m²hc
- **CHASSIS LOAD CAPACITY:** Capacity: 200 Kg/m²

FLOOR

- **METAL FRAME COATING:** Material: Fiber Cement Boards
- **FLOOR COVERING:** Material: PVC Vinilin

ROOF

- **ROOFING SYSTEM:** Type: Special seam clamps for sandwich panels made of PUR. Rainwater drainage through a special fastening system.
- **ROOF INSULATION:** Type: Special sandwich panel for roofs, complete thermal insulation. Rainwater is evacuated through hidden gutters in the roof structure.
- **EXTERNAL SURFACE COVERING:** Color: Ral 9002
- **INTERNAL SURFACE COVERING:** Color: Ral 9002

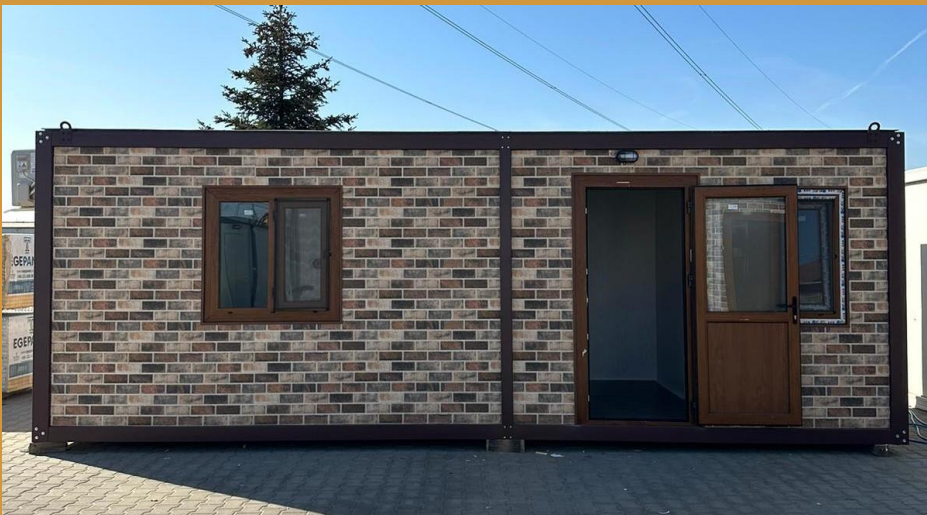
WALLS

- **SYSTEM:** Type: Special sandwich panel with PUR insulation
- **EXTERNAL SURFACE COVERING:** Material: Ral 9002 profile, metal sheet
- **INTERNAL SURFACE COVERING:** Material: Ral 9002 profile, metal sheet
- **WALL INSULATION:** Type: Special thermally insulated sandwich wall panel covered with galvanized sheet

MODULAR HOUSES 1.4 (28.8 m²) - £19,600











WHAT IS INCLUDED

- Room and Bathroom Layout
- Bathroom equipped with sink + vanity unit + mirror, toilet bowl, electric tap, shower cabin
- Golden Oak UPVC Exterior Door, dimensions 900x2000 mm
- Golden Oak UPVC Room and Bathroom Doors, dimensions 800x2000 mm
- 2pcs Golden Oak UPVC windows, dimensions 1000x1000 mm, fixed + tilt-and-turn
- 1 bathroom ventilation window, 500x500 mm

- Air conditioning 12000 BTU with inverter
- Electric convector heater 1500 W
- Interior wall cladding with PVC paneling
- Exterior cladding with decorative polystyrene, pattern 001
- Finishes for doors and windows
- Electrical installation
- Plumbing installation

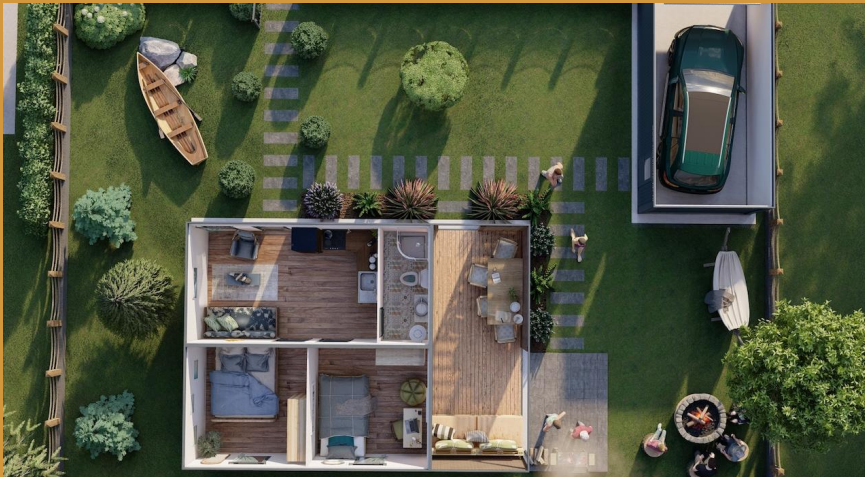
1. Project planning: The customer works with Home Intelligent to create a custom project that meets their needs and budget. This includes the layout of the interior and exterior, as well as the type of finishes.

2. Budget and contract: Home Intelligent provides the customer with a detailed budget for the project and a contract that outlines the scope of work and the terms of the agreement.

3. Production: The modular home is built in a factory according to the approved project plan.

4. Foundation and connections: The foundation is prepared and the necessary connections are made to the utilities.

5. Delivery: The modular home is delivered to the customer's site and installed.



WEBSITE: www.home-intelligent.co.uk

EMAIL: contact@home-intelligent.co.uk

PHONE NUMBER: +44 7751 954 142

ADDRESS: 37A, Palace Grove, BRI3HB, LONDON, UK